

enolcon gmbh

‘Power for the future’



CONTENT

enolcon company overview

enolcon's areas of service

enolcon's references



CONTENT

enolcon company overview

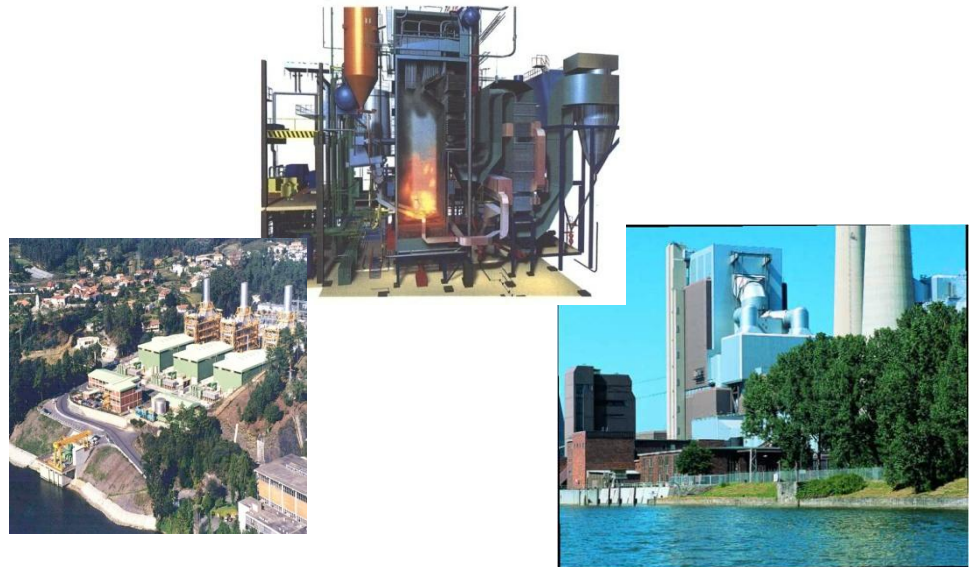
enolcon's areas of service

enolcon's references



enolcon company overview – Key Company Data:

- **Founded in 2008**
- **Family-owned**
- **Headquartered in Bietigheim-Bissingen (near by Stuttgart)**
- **Revenues approx. > 1.000.000,- Euro**

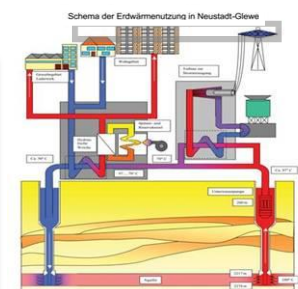


enolcon company overview – Business activities



Energy and Power Plant Technology

- **Conventional fuels**
 - Natural Gas-fired Combined Heat and Power Plants
 - Hard Coal and Lignite Coal-fired Plants
 - RDF-fired Plants (EBS/ESBS)
- **Renewables**
 - Biomass
 - Concentrated Solar Power (CSP)
 - Photovoltaics (PV)
 - Biomass Gasification
- **Clean Technologies**
 - Waste Air Cleansing
- **Others**
 - Geothermal Power Plants



CONTENT

enolcon company overview

enolcon's areas of service

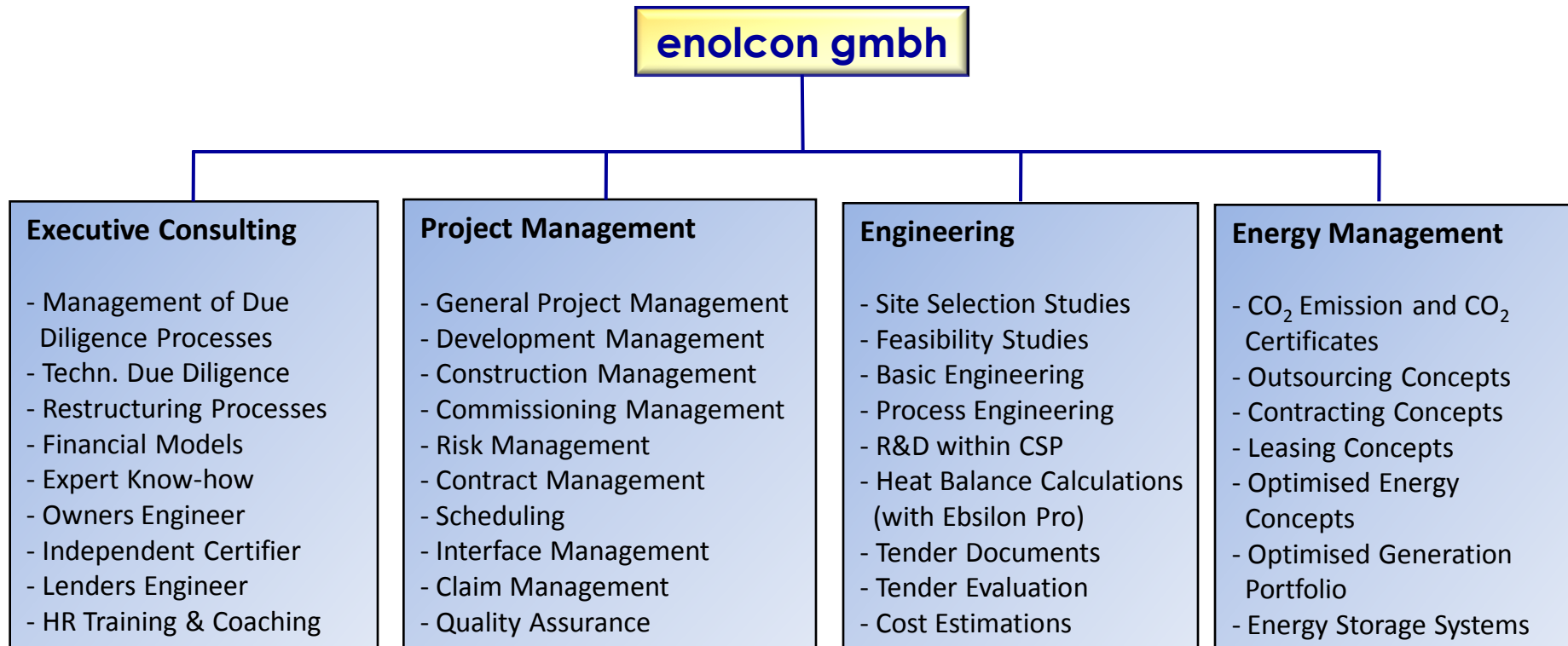
enolcon's references



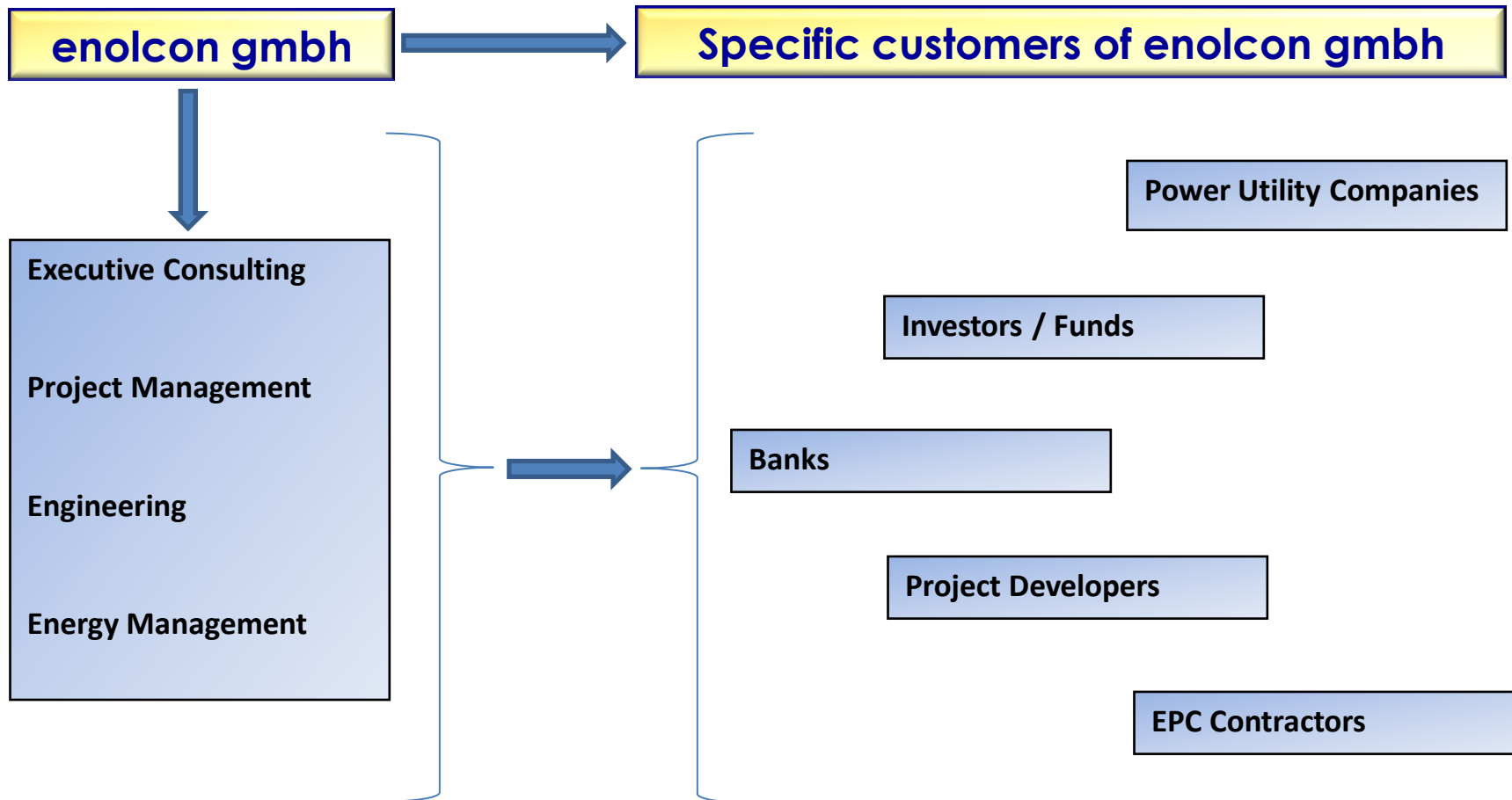
Within the different technology sectors, enolcon can provide the following services:

- Executive Consulting
- Project Management
- Engineering
- Energy Management

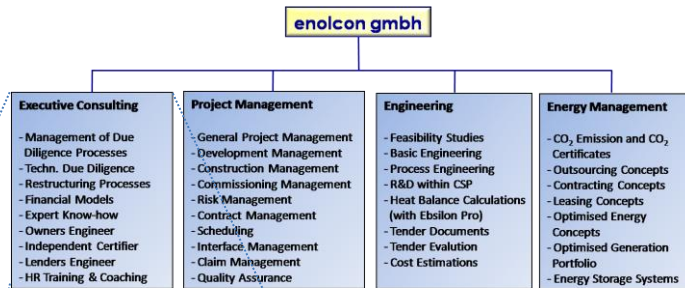




enolcon's areas of service: customers (3)



enolcon's areas of service: customers (4)



Executive Consulting

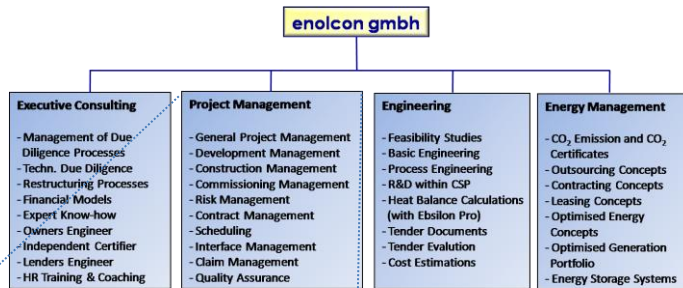
- Management of Due Diligence Processes
- Techn. Due Diligence
- Restructuring Processes
- Financial Models
- Expert Know-how
- Owners Engineer
- Independent Certifier
- Lenders Engineer
- HR Training & Coaching

- Evaluation of projects, assets and companies, preparation of GO/NOGO-decisions based on experiences, benchmarks, tools (e.g. financial models)
- Support in the set-up and organisation of companies, restructuring of M&A
- Independent consultancy works
- Technical support as Owner's Engineer
- Support for the lenders monitoring project progress, fulfillment of payment or LC conditions

Actual examples:

- * Due diligence of a power utility
- * 100 MW_{el}-CSP-project
- * Consultancy works for a power utility on integration of acquired power plants

enolcon's areas of service: customers (5)



Project Management & Supervision

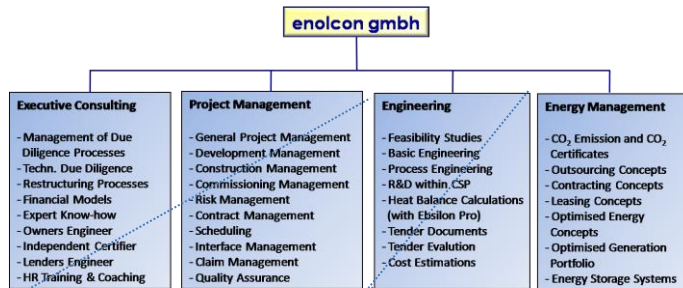
- General Project Management
- Development Management
- Construction Management
- Commissioning Management
- Risk Management
- Contract Management
- Scheduling
- Interface Management
- Claim Management
- Quality Assurance

- Active project management over the complete project life time for and on behalf of clients
- Support in the set-up and organisation of projects, close follow up
- Scheduling or review of schedules
- Identification of project risks
- Contract management, mitigation of claims
- Identification of interfaces and mitigation of risks
- Project development until financial close
- Supervision/management of construction and commissioning activities

Actual examples:

- * Project management of a 400 MW CCGT-CHP-plant
- * 100 MW_{el}-CSP-project

enolcon's areas of service: customers (6)



Engineering

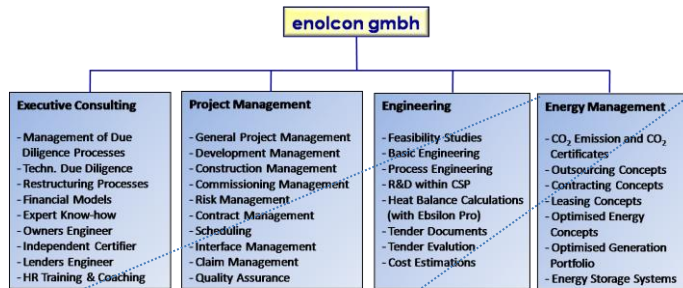
- Site Selection Studies
- Feasibility Studies
- Basic Engineering
- Process Engineering
- R&D within CSP
- Heat Balance Calculations (with Ebsilon Pro)
- Tender Documents
- Tender Evaluation
- Cost Estimations

- Engineering Services on Know-how level, e.g. basic engineering
- Evaluation and services for technology Development
- Engineering design for key components (turbines, condensers etc.)
- Estimations for plant investment costs, O&M costs, site development costs
- Preparation of tender documents, tender evaluations (technical and commercial)
- Heat and mass balance calculations with Ebsilon Pro

Actual example:

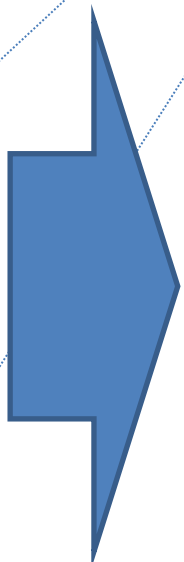
- * Engineering of tender documents for steam turbines, boiler, air cooled condenser

enolcon's areas of service: customers (7)



Energy Management

- CO₂ Emission and CO₂ Certificates
- Outsourcing Concepts
- Contracting Concepts
- Leasing Concepts
- Optimised Energy Concepts
- Optimised generation Portfolio
- Energy Storage Systems



- CO₂ monitoring, CO₂ certificate trading
- Development of outsourcing concepts for industry parks
- concepts to optimise on-site power and heat generation
- Optimised energy dispatch with advanced energy storage systems

Actual example:

- * Battery systems for stationary applications
- * Contracting project to optimise the power and heat supply

CONTENT

enolcon company overview

enolcon's areas of service

enolcon's references



CONTENT

enolcon company overview

enolcon's areas of service

enolcon's references



enolcon's References – selected Projects



- Due Diligence on coal-fired power stations (capacity range up to 800 MW_{el})
- Project Management for a 400 MW_{el} CCGT-CHP power plant
- Consultancy Work on a CSP (Concentrating Solar Power) project
- Feasibility Study and Basic Engineering Work for a 100 MW_{el} CSP project
- Detailed technical comparison of CSP-systems (Linear Fresnel)
- Pre-engineering/concept study for a 130 Mwel CCGT-CHP-power plant
- Owner's Engineer for the Biomass Gasification Project ,Blue Tower Herten
- Due Diligence for a power utility
- Due Diligence for a production company
- Consultancy Work for project development of a 900 MW coal-fired power plant

enolcon's References (excerpt)– Partners and Customers

